



PINBALL CLEMONS
— FOUNDATION —

**THE MAINSTREAM
BURSARY PROGRAM**

**BRINGING YOUTH FROM
MARGINS TO MAINSTREAM**

pinballfoundation.ca

THE MAINSTREAM BURSARY PROGRAM

The Pinball Clemons Foundation provides marginalized youth with educational resources and options to integrate into the mainstream of society. We want to ensure all youth are reading at grade level and graduating from high school ready for post-secondary education.

With the implementation of a customized mentorship program and financial support, we are removing the barriers that often hinder success. The ultimate goal is not a diploma or degree – we want to see youth successfully enter the workforce, gainfully employed in careers they desire.

Our Margins to Mainstream Partnership Model is working to change the narrative for marginalized youth.



YOUTH IN THE “MARGINS”

The Pinball Clemons Foundation supports youth who identify with a financial need, lacking the resources to succeed academically.

- PHASE 1**

Helping students graduate from high school ready for post-secondary educational opportunities.
- PHASE 2**

Assessment and interview process

OPPORTUNITIES AVAILABLE

Trades Program

12 Weeks

IT Program

15 Weeks

Business Admin Certificate

15 Weeks

Urban Arts Program

9 Months

College or University

1-4 Years

- PHASE 3**

Granting of Post-Secondary bursaries



Weekly Post-Secondary Prep Financial Literacy and Mentorship

Weekly and Monthly Professional Mentorship Program

SUPPORT SQUAD

SITE MENTOR

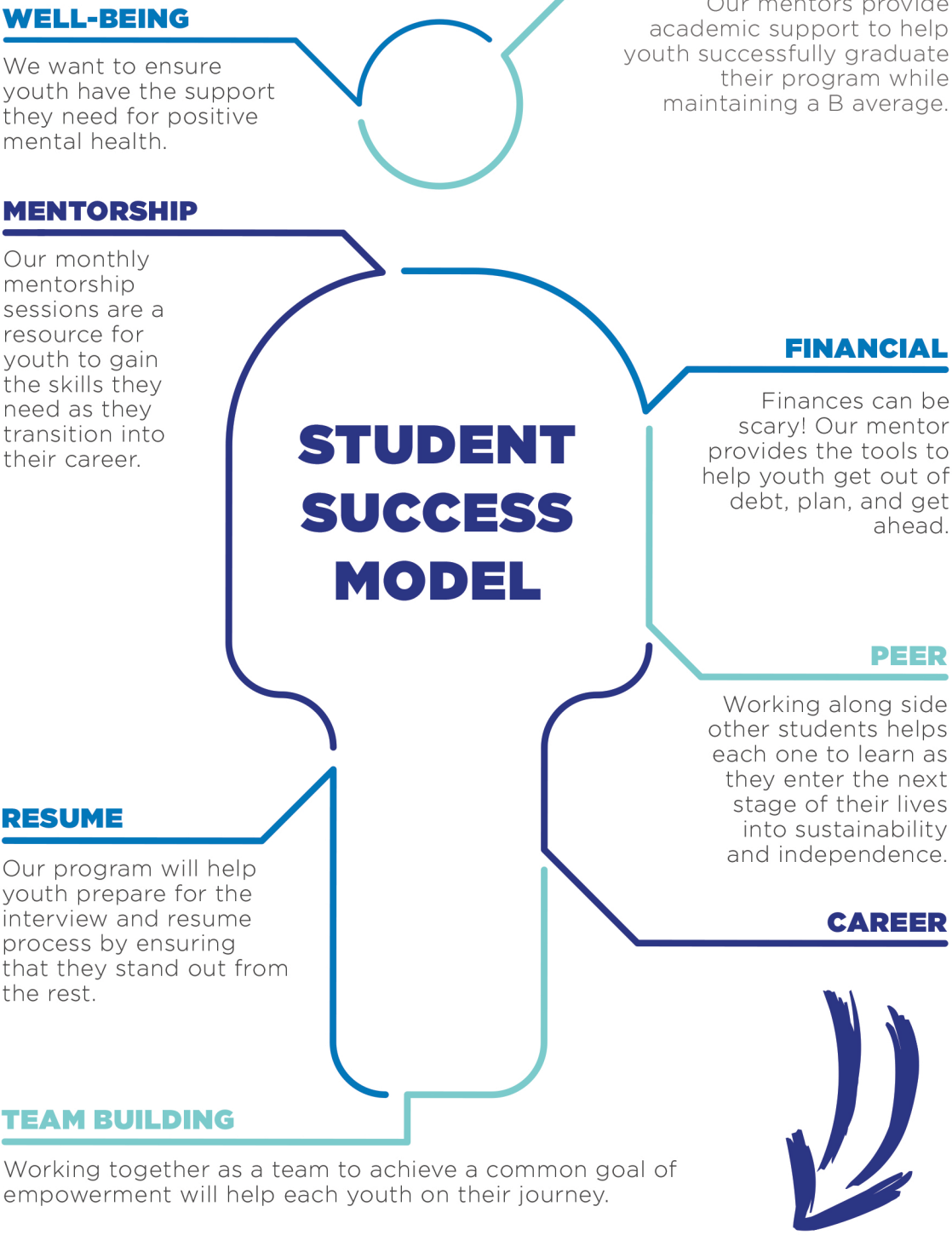
ACADEMIC MENTOR

FINANCIAL MENTOR

CAREER MENTOR

MENTAL HEALTH RESOURCES

OTHER RESOURCES AS NEEDED



Our ultimate goal is to see youth gainfully sustainably employed in careers they desire.

SO NOW WHAT? Youth that struggle with challenges carry them into their adult life. Our support with youth is still ongoing through their career journey, as challenges do not stop after post-secondary. Our goal is to stay in contact with the youth until they are stable. Youth that transition to their career are encouraged to stay in the program as an Alumni to receive continued support and help guide their peers to success.

PINBALL CLEMONS FOUNDATION

KEYS TO SUCCESS



ACADEMIC INTERVENTION



SPORT FOR DEVELOPMENT



REMOVING FINANCIAL BARRIERS



MENTORSHIP



FINANCIAL LITERACY



ACCELERATED OPPORTUNITIES



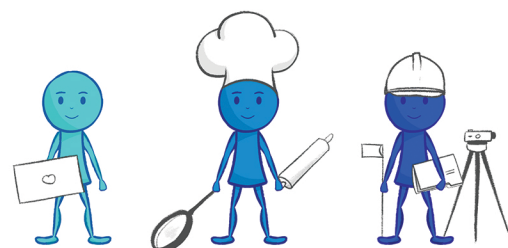
COMMITMENT AND ACCOUNTABILITY



RESEARCH AND ADVOCACY

MOST IMPORTANTLY, SUPPORT FROM DONORS LIKE YOU!

Your ongoing support is important to us, as we work on transitioning students to career through a holistic wrap-around educational model. A monthly gift allows us to support more youth year round. Your support will not only go to covering the cost of educational expenses for a youth, but will also support them through any barriers they may be facing on their way to career.



pinballfoundation.ca/monthlygiving